

**VERION®**

AGRICULTURA



# GRAIN HARVEST MONITOR

THE ULTIMATE TOOL FOR YOUR  
PRECISION FARMING CYCLE



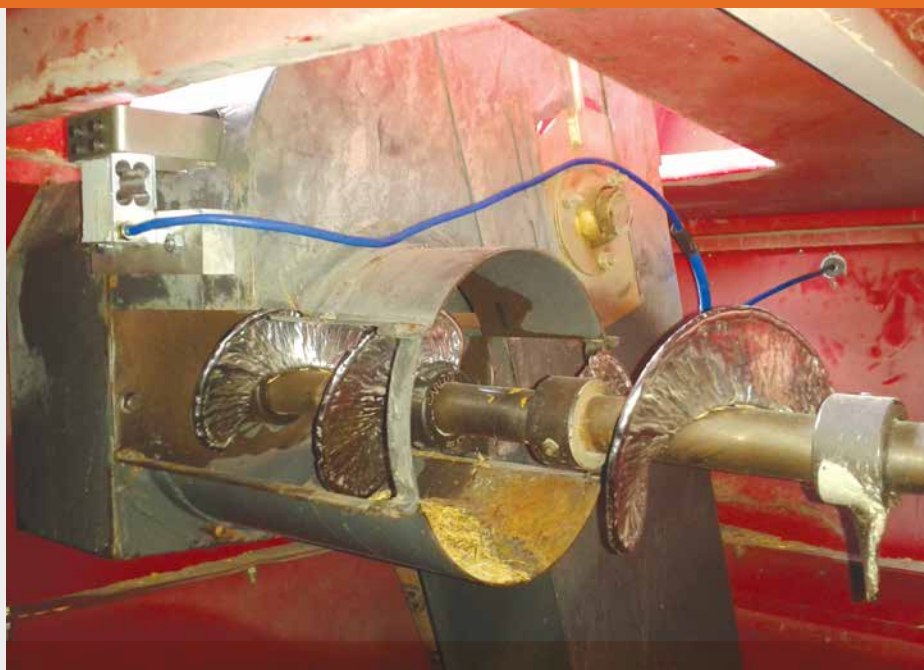
\* This computer is upgradeable to all our PF solutions

*The impact plate used to measure the grain flow on the loading auger can adapt on most grain harvesters brands on the market.*

## FEATURES AND OPERATION

The grain yield measuring system aims to register in real harvest time the amount of grain collected in every part of the field, thus generating a georeferenced variability map that can then be used to make better decisions regarding land treatment and input applications.

The flow of harvested grain is measured by an impact plate at the end of a grain lift conveyor, and this information is transmitted via a CAN BUS to the Vcom computer, where it is displayed on screen and also stored in the datalogging memory.







## RECORD MAPS

The information collected by the device can be displayed by the computer software provided with the kit. Result maps in shape or kml format can be exported for viewing with other GIS software or google earth. View dry and moisture yield maps, grain temperature, moisture and working speed on screen, together with other data, such as machine operating times, daily starting and finishing working time, total hectares and total harvested product estimated by the strike sensor.

## BENEFITS OF VCOM 7.0

The system boasts the following components:

- 7- inch color screen , with SD memory for data storage.
- GPS receiver for geo positioning.
- Grain flow Sensor.
- Grain moisture Sensor.
- Loading auger RPM Sensor.
- Platform height Sensor.

## GPS OPTIONS ACCORDING TO YOUR NEEDS



**LCGPS:** GPS/Glonass L1 10 Hz  
Pass-to-pass accuracy 30 cm\*  
\*See catalogue LCGPS

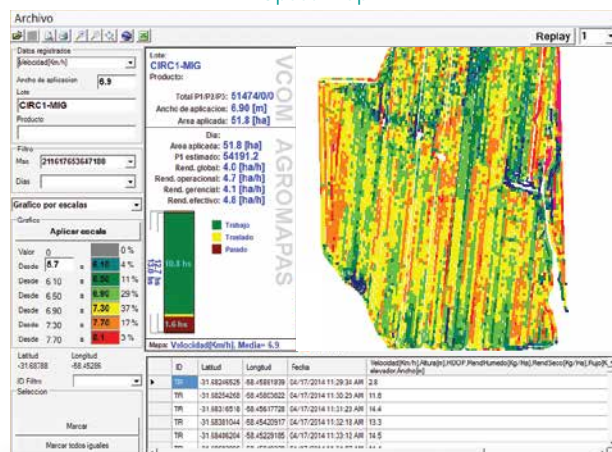


**AG-STAR:** GPS/Glonass L1 10 Hz  
Pass-to-pass accuracy 20 cm\*  
\*See catalogue AG-Star

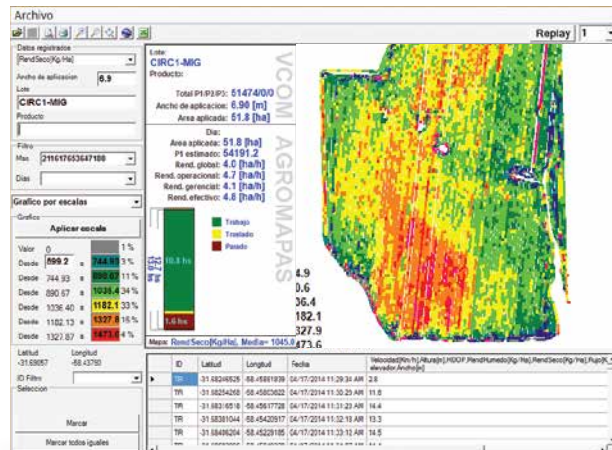


**SMART6-L:** GPS/Glonass L1/L2 20 HZ /  
Terrastar-c option.  
Pass-to-pass accuracy 3-5 cm\*  
\*See catalogue SMART 6-L

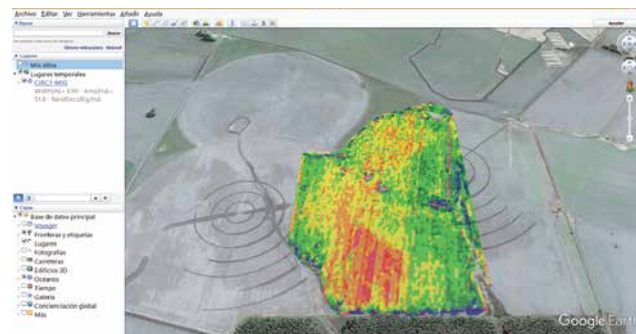
Speed Map



Harvest Map



Maps can also be exported in KML format  
for Google earth



### ARGENTINA

Intendente Campos 1617/23, San Martín - Buenos Aires  
Rotary lines: (+5411) 4724-1300 ext. 172  
agricultura@verion.com.ar | www.agriculturaverion.com.ar

### COLOMBIA

Trv. 93 # 53-32 Bg. 17 Parque Empresarial El Dorado  
Tel: +57 (1) 467-2473/2533/2540  
ventas@agriculturaverion.com.co | www.agriculturaverion.com.co